

# COMMUNITY FOREST MANAGEMENT IN THE PHILIPPINES

## FOREST AND PEOPLE STATISTICS PHILIPPINES

**Forest**  
 Total land area: 30.00 million ha  
 Forestland: 15.88 million ha (53% of land area)  
 Forested: 5.49 million ha (18.3% of land area)  
 Area under CBFM: 5.90 million ha, of which 2.50 million is under ancestral domain claims (19.7% of land area)

**People**  
 Population: 81 million  
 Forest-dependent people: 16 million, 6 million of whom are indigenous peoples (IPs)  
 Total CBFM Sites : 4,881  
 CBFM Sites with POs: 2,132

### Nature of CFM

*What is community management?* Under the country's Community-Based Forest Management (CBFM) strategy, community management means a long-term community-led planning for sustainable utilization of forestland resources, management plan implementation, and equitable sharing of benefits for the socio-economic upliftment of community members. To forge a CBFM agreement with the Department of Environment and Natural Resources (DENR), the community needs to be represented by a registered entity, usually a people's organization (PO) composed of various sectors from the local area. PO members should be active in all phases and aspects of forest management including site identification, formulation and implementation of a 25-year management plan, development and enforcement of internal rules, agreements, and mechanisms for the equitable sharing of responsibilities and benefits. Overall, the POs are responsible for the protection, rehabilitation and conservation of the natural resources in the CBFM area and assist the government in the protection of adjacent forestlands.

*Where are the CFM areas?* In the Philippines, land is classified primarily into (1) alienable and disposable (private lands) and (2) timberland / forestland (public domain). CBFMP targets uplands and coastal lands of the public domain with communities residing within or nearby who are largely dependent on natural resources for livelihood. The 4,881 CBFM projects being implemented cover an area of 5.9 million hectares composed mostly of DENR's people-oriented forest management sites established over the past 30 years.

### Policy and Implementation Environment

Anchored on the firm belief of "people first and sustainable forestry will follow", the Philippines made strides in forest management policy with the passing of landmark national laws and the issuance of DENR administrative orders outlining implementing rules over the last decade, including:

- Local Government Code (RA 7160 / 1991)
- National Integrated Protected Areas System (NIPAS) Act (RA 7586 / 1992)
- Comprehensive Land Use Planning (EO 72 / 1993) in local government units
- Community-Based Forest Management (CBFM) (EO 263 / 1995)
- Indigenous People's Rights Act (IPRA) (RA 8371 / 1997)
- Various DENR Administrative Orders (DAOs) and Special Orders relative to the implementation of CBFM
- Joint memorandum circulars of the DENR and the Department of the Interior and Local Government (DILG) listing the co-responsibilities of field offices of the DENR and DILG and local government units.

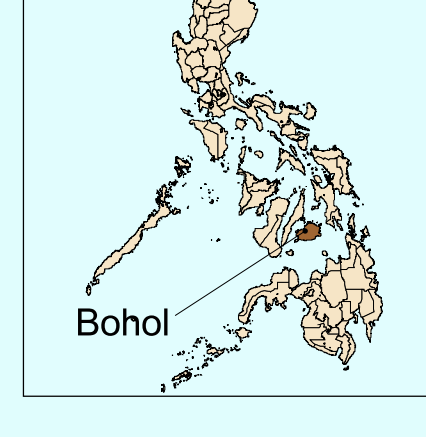
Granting of tenure with more than 30% of the uplands is a major accomplishment. However, implementation has been slow and uncoordinated, fraught with politics, the lack of appropriate training of DENR field personnel on CBFM implementation, poor leadership and management skills of POs, apathy of some LGUs, inadequate funding, and sometimes inconsistent policies and the inaction on the Sustainable Forest Management bill, sidelined by three Congresses already. The DENR, together with independent groups, is currently revising the impact of CBFM on the country's forests and forest-dependent communities since its inception in 1997 with the intention of securing greater impact.

**SUPPORTED BY:** **FORD FOUNDATION**  
 Strengthen democratic values, reduce poverty and injustice, provide international cooperation and advance human achievement

**PREPARED BY:** **ENVIRONMENTAL SCIENCE FOR SOCIAL CHANGE**  
 2/F Galena Main Bldg., Graham Ave. cor. Ma. Clara St. Tagbilaran City, Bohol July 2004



## PHILIPPINES

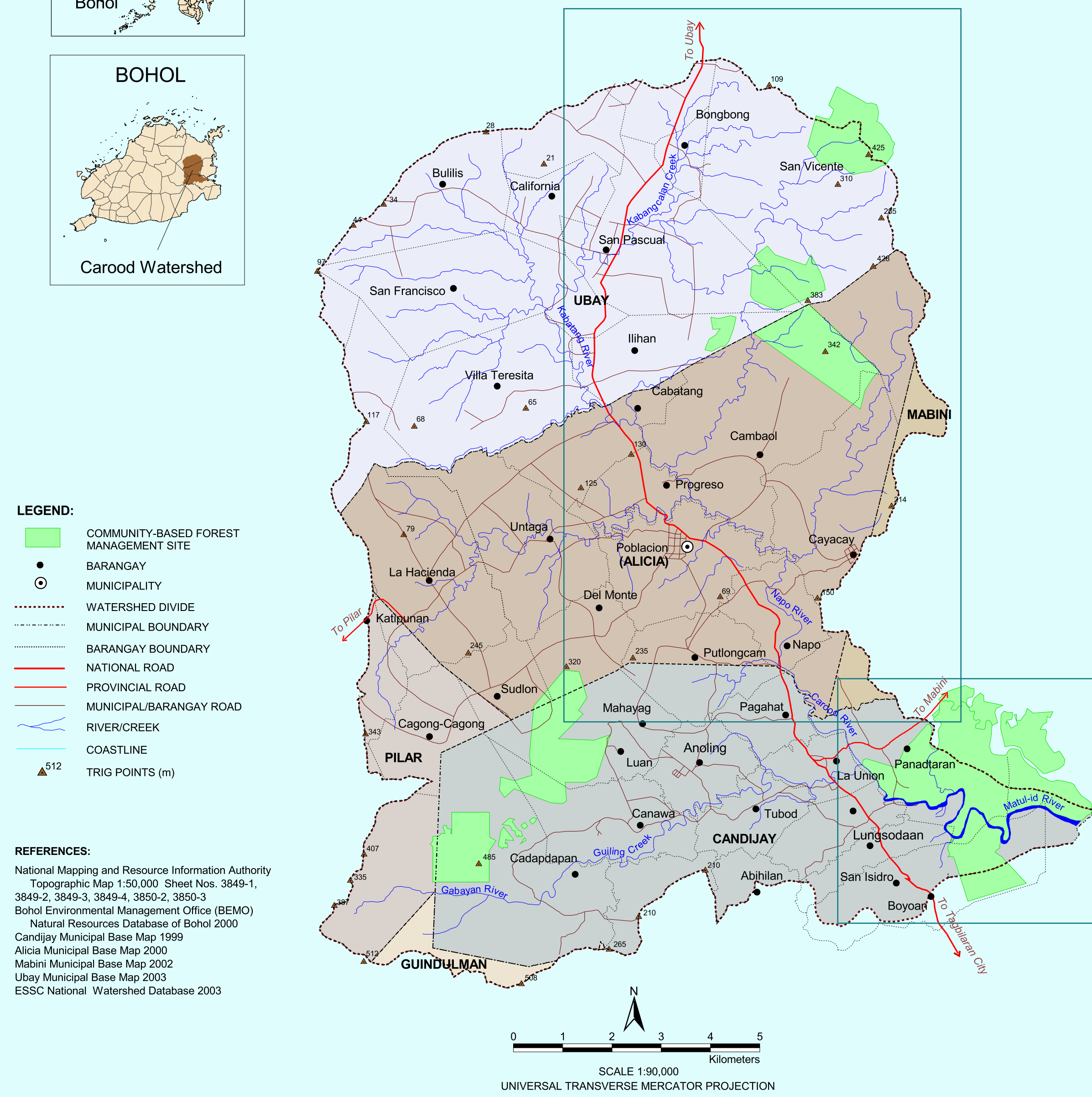


## BOHOL



## CAROOD WATERSHED

Forest	People
Total land area: 20,472 ha	Population: 50,000+
Forestland: 4,861 ha	No. of CBFM Agreements: 7
Forested: 2,047 ha	
Area under CBFM: 2,472 ha	

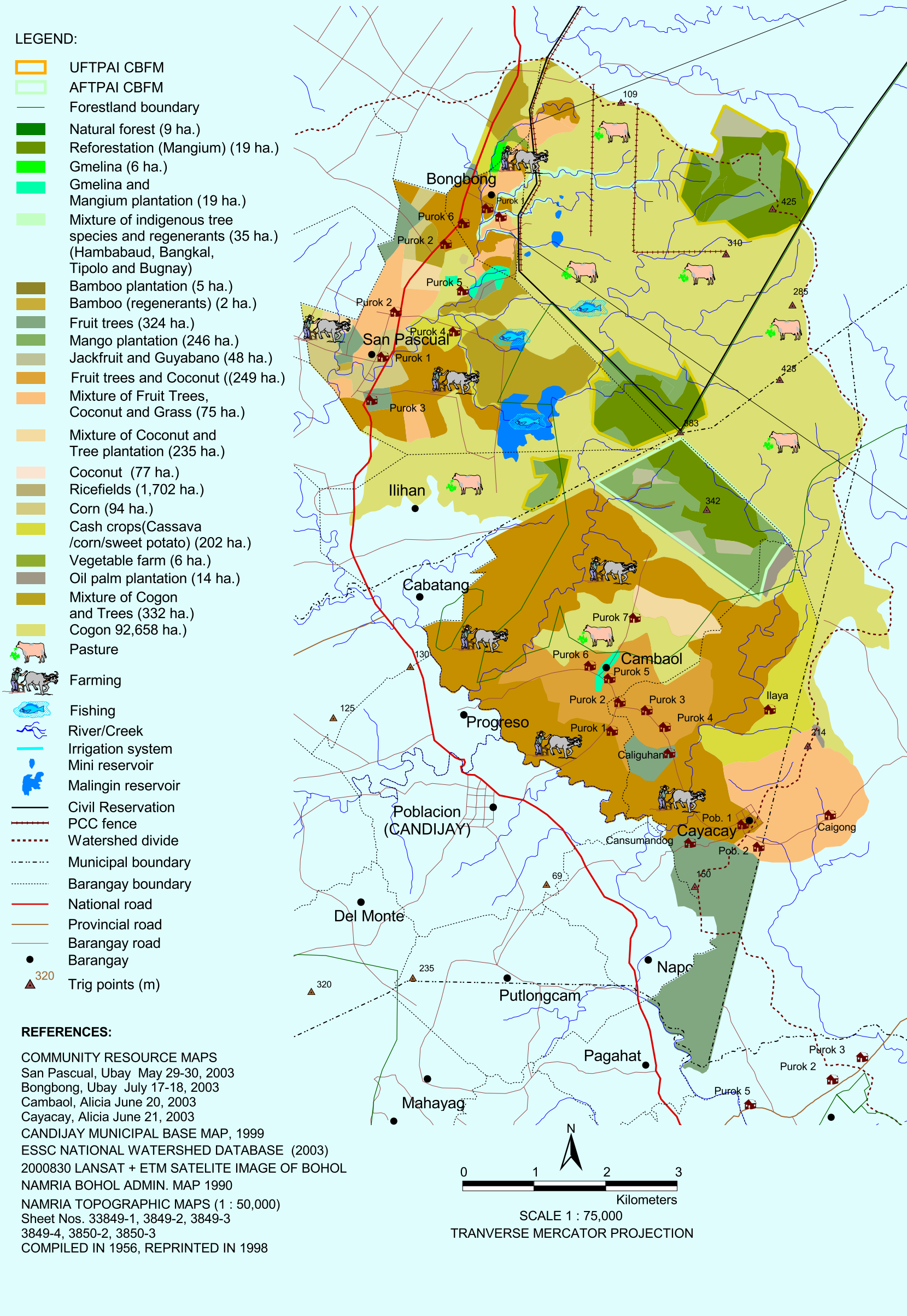


**LEGEND:**  
 COMMUNITY-BASED FOREST MANAGEMENT SITE  
 BARANGAY  
 MUNICIPALITY  
 WATERSHED DIVIDE  
 MUNICIPAL BOUNDARY  
 BARANGAY BOUNDARY  
 NATIONAL ROAD  
 PROVINCIAL ROAD  
 MUNICIPAL/BARANGAY ROAD  
 RIVER/CREEK  
 COASTLINE  
 TRIG POINTS (m)

**REFERENCES:**  
 National Mapping and Resource Information Authority  
 Topographic Map 1:50,000 Sheet Nos. 3849-1, 3849-2, 3849-3, 3849-4, 3850-1, 3850-2, 3850-3  
 Botol Environmental Management Office (BEMO)  
 National Resources Database of Bohol 2000  
 Alicia Municipal Base Map 2000  
 Mabini Municipal Base Map 2002  
 Ubay Municipal Base Map 2003  
 ESSC National Watershed Database 2003

## UPLAND CBFM VILLAGES

AFTPAI	UFTPAI
Area under CBFM: 252 ha	Area under CBFM: 107 ha (approved) + 450 hectares (pending)
No. of Villages Covered: 2	No. of Villages Engaged: 1
Year Approved: 2001	Year Approved: 2001
Village Population: 2,755	Village Population: 4,557
No. of CBFM Members: 74	No. of CBFM Members: 109
Year Organized: 1998	Year Organized: 1998
Assisting Organization: Agos Mountain Climbers Association / DENR Susimo	Assisting Organization: DENR Susimo



**LEGEND:**  
 UFTPAI CBFM  
 AFTPAI CBFM  
 Forestland boundary  
 Natural forest (9 ha.)  
 Reforestation (Manglum) (19 ha.)  
 Gimelina (0 ha.)  
 Gimelina and Mangium plantation (19 ha.)  
 Mixture of indigenous tree species and regenerants (35 ha.) (Hambabud, Bangad, Tipolo and Bugnay)  
 Bamboo plantation (5 ha.)  
 Bamboo (regenerants) (2 ha.)  
 Fruit trees (324 ha.)  
 Mango plantation (246 ha.)  
 Jackfruit and Guyabano (48 ha.)  
 Fruit trees and Coconut (249 ha.)  
 Mixture of Fruit Trees, Coconut and Grass (75 ha.)  
 Mixture of Coconut and Tree plantation (232 ha.)  
 Coconut (77 ha.)  
 Rootcrops (1,702 ha.)  
 Corn (94 ha.)  
 Cash crops/Cassava (sweet potato) (202 ha.)  
 Vegetable farm (6 ha.)  
 Oil palm plantation (14 ha.)  
 Mixture of Cogan and Trees (332 ha.)  
 Cogan (92,688 ha.)  
 Pasture  
 Farming  
 Fishing  
 River/Creek  
 Irrigation system  
 Mini reservoir  
 Malinging reservoir  
 Civil Reservation  
 PCC fence  
 Watershed divide  
 Municipal boundary  
 Barangay boundary  
 National road  
 Provincial road  
 Barangay road  
 Barangay road  
 Trigon points (m)

**REFERENCES:**  
 COMMUNITY RESOURCE MAPS  
 San Pascual, Ubay, May 29/30, 2003  
 Bongbong, Ubay, July 17-18, 2003  
 Cambalao, Alicia, June 21, 2003  
 Cayagay, Alicia, June 21, 2003  
 CANDIJAY MUNICIPAL BASE MAP, 1999  
 ESSC NATIONAL WATERSHED DATABASE (2003)  
 2000/80 LANSAT - ETM SATELLITE IMAGE OF BOHOL  
 NAMRIA BOHOL ADMIN. MAP 1990  
 NAMRIA TOPOGRAPHIC MAPS (1:50,000)  
 Sheet Nos. 3384-1, 3384-2, 3384-3, 3384-4, 3385-1, 3385-2, 3385-3  
 COMPILED IN 1996, REPRINTED IN 1998

## COMMUNITY RESOURCE MAP

### BARANGAY BONGBONG UBAY, BOHOL

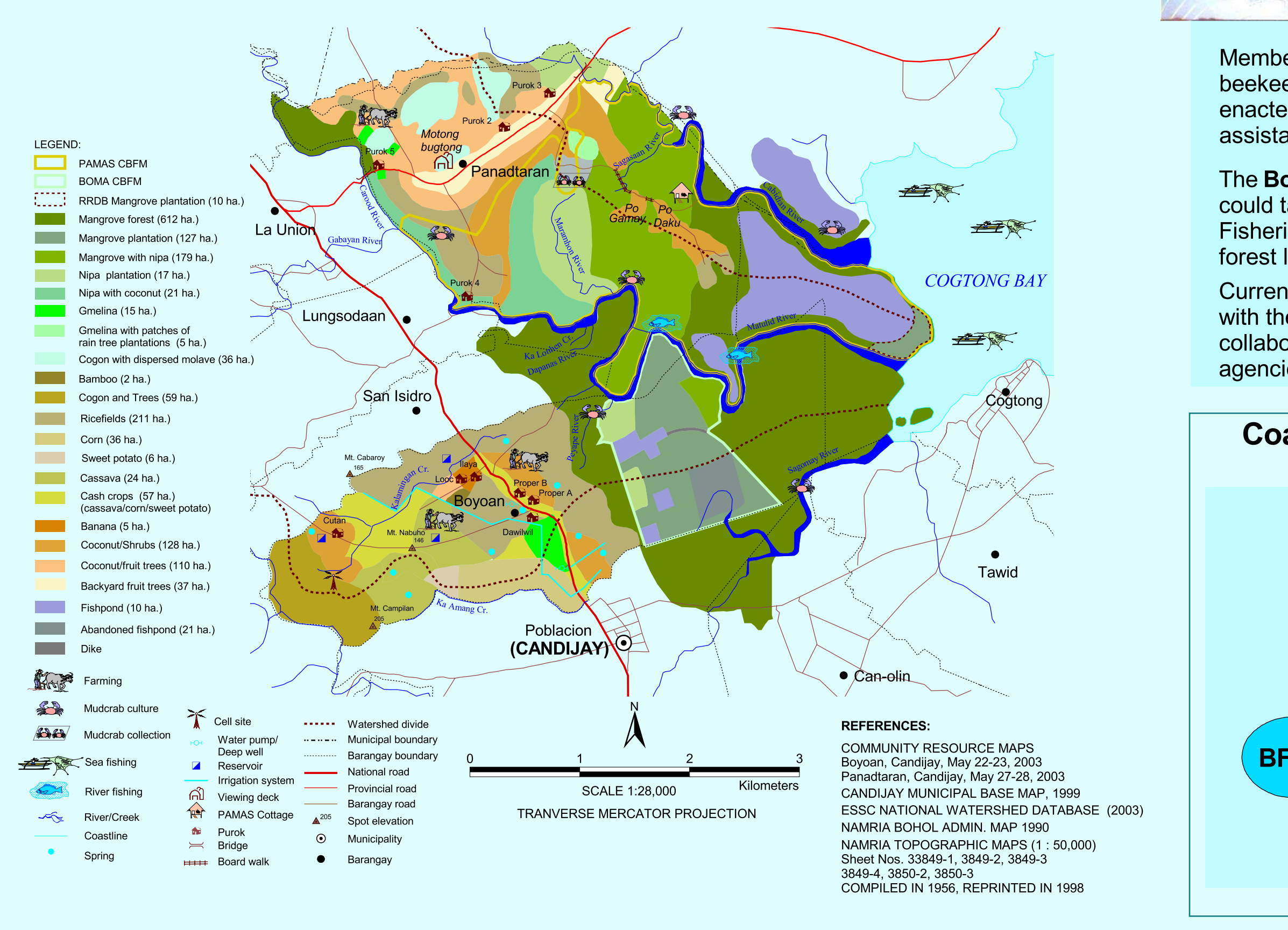


### The Community Resource Map: Bongbong for the Past 6 Administrations

Presence of basic services, community activities and CBFMA are the important elements that the map wanted to communicate and understood by others. During the mapping activity the community expressed how they live and survive with the present resources and situation they are experiencing. According to Nong Tili who is the first and longest serving barangay captain of Bongbong (1968-1998), from the time the village was established as barangay, the people are poor "ang pamumuhay ay hinahabol ang gutom -- one day one eat". For the past six President since the barangay was established, they are still longing to improve basic services and increase livelihood opportunities in order to survive. Only few people are college graduates and employed. Water is the most important because majority of them are engaged in farming. When the Malinging dam was constructed in the neighboring barangay of San Pascual in late 1990s and irrigation system was established, their lives improved but still remain poor because of limited land to cultivate. It resulted for the people to look for job opportunities in other municipalities and outside of the province. The map shows poor site selection of the CBFM project that supposedly intends to improve the life of the community and environment but eventually resulted to ineffective implementation. It is situated at the midst of a grassland area inside the civil reservation area approximately 4 kilometers away from the barangay center. The PO members have to cross 3 barbed-wire fences of the civil reservation in order to reach the CBFM site to plant fast growing trees where they are paid P100/day. Since 1998 when the comprehensive site development was granted to them, PO members are still having difficulties protecting it from recurring plantation fires even when the CBFMA was granted in 2001. Only few PO members opted to live in the CBFM sites because it is far from the school and health center. This calls for attention from the DENR and LGU as to what other options can be provided to implement and manage properly the CBFMA site and other needs of the community that are socially, economically and environmentally beneficial.

## COASTAL CBFM VILLAGES

BOMA	PAMAS
Area under CBFM: 163 ha	Area under CBFM: 597 ha
No. of Villages Covered: 1	No. of Villages Covered: 2
Year Approved: 1999	Year Approved: 1999
Village Population: 1,402	Village Population: 1,298
No. of CBFM Members: 51	No. of CBFM Members: 48 (1999) / 162 (2003)
Year Organized: 1996	Year Organized: 1996
Assisting Organization: Coastal Resource Management Program / USAID	Assisting Organization: DENR/USAID Coastal Resource Management Program



**LEGEND:**  
 PAMAS CBFM  
 BOMA CBFM  
 Mangrove forest (812 ha.)  
 Mangrove plantation (107 ha.)  
 Mangrove with rice (179 ha.)  
 Nipa plantation (17 ha.)  
 Nipa with coconut (21 ha.)  
 Gimelina (15 ha.)  
 Gimelina with patches of nipa tree plantations (0 ha.)  
 Coconut with dispersed mangrove (36 ha.)  
 Bamboo (21 ha.)  
 Cogan and Trees (58 ha.)  
 Rootcrops (211 ha.)  
 Corn (24 ha.)  
 Sweet potato (0 ha.)  
 Cassava (24 ha.)  
 Cash crops (07 ha.)  
 Banana (0 ha.)  
 Coconut/Olive (128 ha.)  
 Coconut/fruit trees (110 ha.)  
 Backyard fruit trees (37 ha.)  
 Farmland (10 ha.)  
 Abandoned farmland (21 ha.)  
 Dike  
 Farming  
 Matrubal culture  
 Matrubal collection  
 Cell site  
 Water pump  
 Days and Reservoir  
 Irrigation system  
 Vessels/dock  
 River/Creek  
 Coastal line  
 Bridge  
 Spring  
 Watershed divide  
 Municipal boundary  
 Barangay boundary  
 National road  
 Provincial road  
 Barangay road  
 Spot elevation  
 Municipality  
 Barangay

**REFERENCES:**  
 COMMUNITY RESOURCE MAPS  
 Boyaan, Candijay, May 22/23, 2003  
 Panadataran, Candijay, May 27/28, 2003  
 CANDIJAY MUNICIPAL BASE MAP, 1999  
 ESSC NATIONAL WATERSHED DATABASE (2003)  
 NAMRIA BOHOL ADMIN. MAP 1990  
 NAMRIA TOPOGRAPHIC MAPS (1:50,000)  
 Sheet Nos. 3384-1, 3384-2, 3384-3, 3384-4, 3385-1, 3385-2, 3385-3  
 COMPILED IN 1996, REPRINTED IN 1998



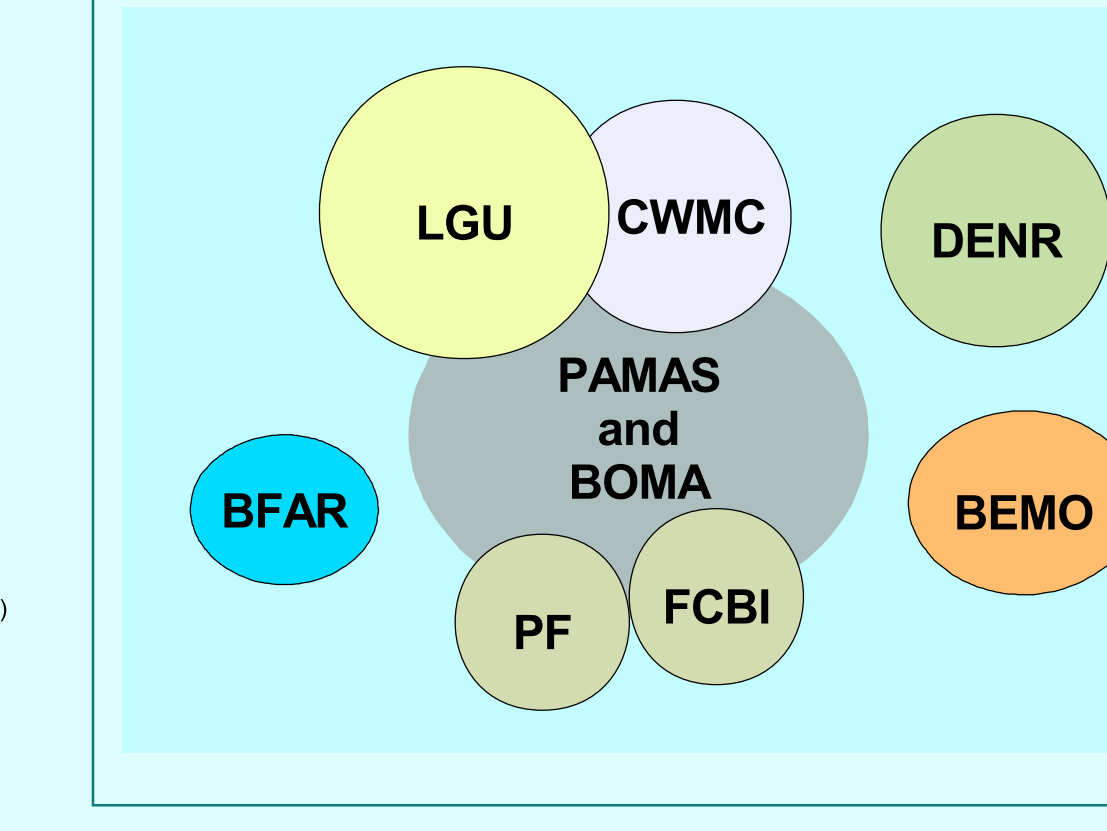
## COASTAL CBFM AREA

Pioneer members of the Panadataran Mangrove Planters Association, Inc. (PAMAS) started at a time of rampant illegal fishing, mangrove cutting, flooding, abandoned leased fishing areas, and lack of alternative livelihood opportunities and some social services. "Twelve years ago, we had big mangrove trees, but cutting was rampant without any rehabilitation or replanting," recalls PAMAS president Ciriaño Cufado. Today, PAMAS is involved in rehabilitating the coastal environment and finding ways to address poverty. It has planted at least 70,000 propagules. In the province of Bohol, PAMAS is recognized as one of the more successful POs involved in natural resource management.

Members have training on environment, capacity building and enterprise development. A Bohol-based NGO extended soft loans for mud crab culture, beekeeping and other income-generating aqua-silviculture projects. The barangay legislative council, whose members are also PAMAS officers, has enacted ordinances lobbied by the PO and allocated funds for training activities. PAMAS is also developing a mangrove eco-tour package with the assistance of external groups.

The Boyaan Mangrove Planters Association, Inc. (BOMA) applied for a CBFMA under the DENR informed the association it could take over the management of an abandoned 50-hectare fishpond. But when it got the CBFM Agreement, the Bureau of Fisheries and Aquatic Resources (BFAR) prevented BOMA from taking over the this fishpond saying it was not classified as forest land. Now families coming from outside the village are illegally occupying the area. Currently, BOMA is beset with internal conflicts and a less cordial working relationship with the barangay council. However, with the participation of barangay chairpersons and PO presidents in the Caruud Watershed Working Group, a more collaborative partnership can be forged among local stakeholders. Better assistance can also be extended by government agencies represented in the CWWG.

### Coastal CBFM Relational Diagram of Stakeholders

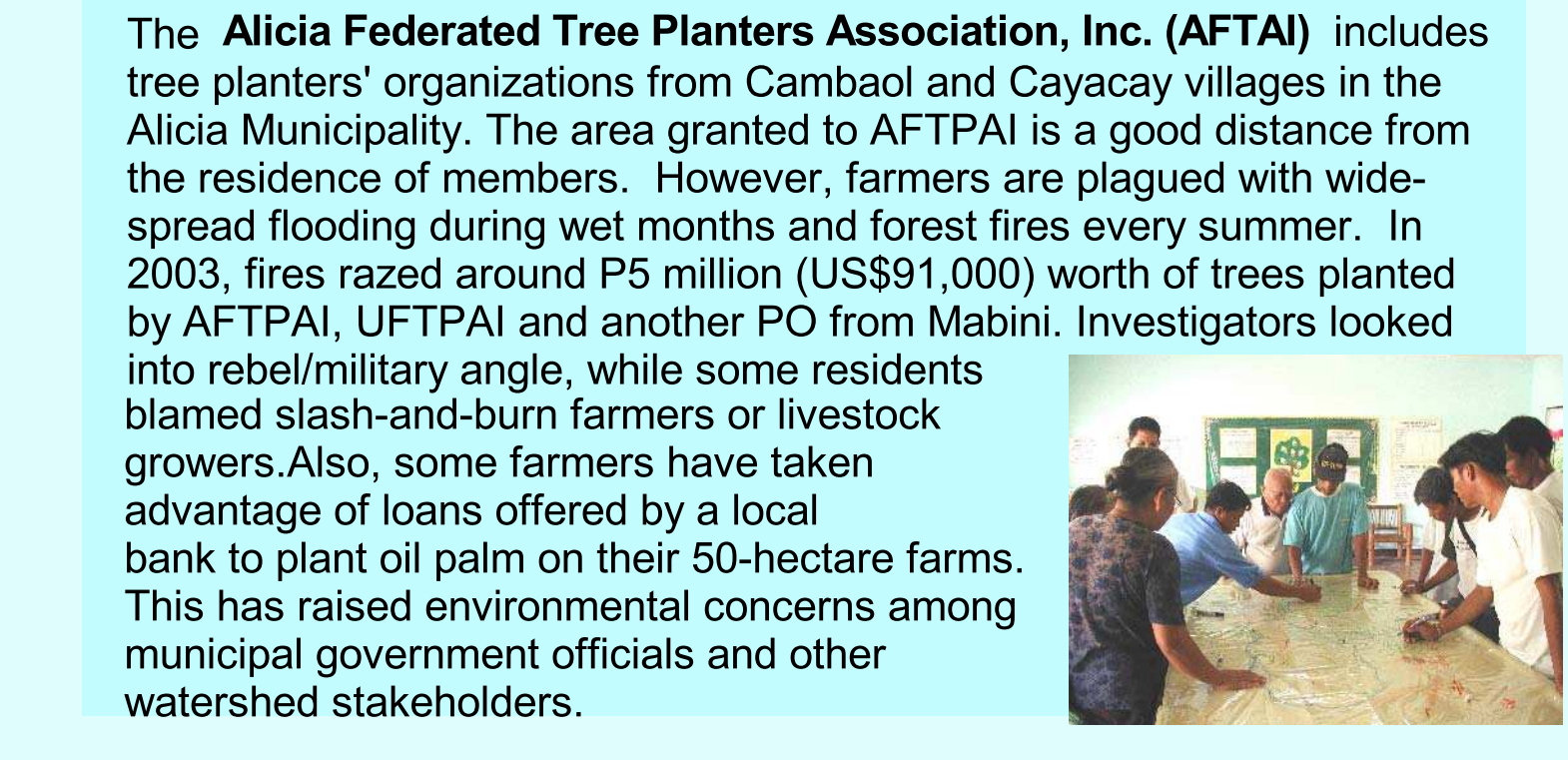


In 1996-1997, the municipal government of Candijay and the Coastal Resources Management Program (CRMP) of the DENR closely collaborated to form people's organizations in Boyaan and Panadataran. In 1999 the PAMAS and BOMA signed separate CBFMAs with the DENR to manage the mangrove. Today, the presence of the DENR is not anymore felt because field personnel rarely communicate or visit the area, unless whenever PAMAS is showcased as a success story among visiting LGUs, NGOs and researchers. Despite the DENR phase-out, both organizations have been sustained with support from LGU and NGOs. Even before CBFMAs were awarded, Path Foundation and FCBI provided assistance to the two POs. These early NGO programs promoted some environmental protection and rehabilitation and provided access to credit for income-generating projects such as hog-raising, beekeeping and aqua-silviculture for prawns, mud crabs and bangus (milkfish). The municipal LGU headed by women mayor and vice mayor with strong environmental consciousness is very supportive of the two mangrove associations. However, barangay council support for BOMA has been minimal because of the strained relationship between the BOMA president and the Boyaan barangay chairperson. With the participation of both in the CWWG, a closer working relationship may be fostered. The area is also under the CWWG.

## UPLAND CBFM AREAS

**The Ubay Federated Tree Planters Association, Inc. (UFTPAI)** groups together three tree planters' organizations. The DENR granted UFTPAI management of 567 hectares of land, 460 hectares of which are within a civil reservation. The remaining 107 hectares located on forestland in serve as the PO's model site for agro-forestry. With funding from the Japan Bank for International Cooperation (JBIC), the DENR contracted the PO to carry out a comprehensive site development (reforestation, agro-forestry and bamboo plantation) of its CBFM area. The site, like most of Ubay, is primarily used for farming and livestock raising, with much of the land covered with cogan or wild grass. Forest fires have been a yearly threat to the reforestation project.

The **Alicia Federated Tree Planters Association, Inc. (AFTPAI)** includes tree planters' organizations from Cambalao and Cayagay villages in the Alicia Municipality. The area granted to AFTPAI is a good distance from the residence of members. However, farmers are plagued with widespread flooding during wet months and forest fires every summer. In 2003, fires razed around P5 million (US\$91,000) worth of trees planted by AFTPAI, UFTPAI and another PO from Mabini. Investigators looked into rebel/military action, while some residents blamed slash-and-burn farmers or livestock growers. Also, some farmers have taken advantage of loans offered by a local bank to plant oil palm on their 50-hectare farms. This has raised environmental concerns among municipal government officials and other watershed stakeholders.



## ESSC

The Environmental Science for Social Change is an environmental research institute that seeks to contribute to the understanding and sustainability of the environment through the integration of scientific analysis and social processes. In Bohol, ESSC is currently implementing Water Resource Regeneration through Environmental Governance Program that is building a pioneering database on Philippine watersheds, conducting water balance studies in selected watersheds, and developing dialogue mechanisms among different watershed stakeholders. ESSC acts as Secretariat for the Philippine Working Group on country resource management and facilitates many dialogues regionally and nationally on country forest management. ESSC is also the AFN partner conducting a comparative assessment of upland and coastal CBFM agreements in the Carood Watershed.

## CWWG

The Carood Watershed Working Group is an informal grouping of various stakeholders of the watershed composed of mayors, planning officers, agriculturists, legislators, barangay heads in areas with CBFMAs, PO leaders, local DENR, the Bohol Environment Management Office, Office of the Provincial Agriculturist, National Irrigation Administration, Central Visayas College of Agriculture, Forest and Technology, and Environmental Legal Assistance Center. Hosting of meetings is rotated among the six municipalities with discussions ranging from their concepts of development and collaborative management to environmental concerns like oil palm plantations, fires, flooding, lack of irrigation facilities, as well as the sustainability of CBFM POs, working group capacity and the commitment of each stakeholder.

## DENR AND SUSIMO

The Department of Environment and Natural Resources is the lead agency implementing the Community-Based Forest Management Program through its various service and field offices. The regional, provincial, and field level DENR offices are responsible for the effective implementation of the CBFM Program in their areas of jurisdiction, in coordination with concerned local government units, other government agencies and NGOs or private sector groups. The Sub-Project Site Management Office (SUSIMO) ensures the implementation and management of the DENR projects on-site, such as the Ubay-Mabini-Alicia (UMA) Watershed Sub-Project in Bohol with a P19 million loan from the Japan Bank for International Cooperation (JBIC) for comprehensive site development.

## PROVINCIAL GOVERNMENT OF BOHOL AND BEMO

The Bohol Provincial Government enacted in 1998 the country's first provincial environment code, providing the framework for Bohol's development thrust as an eco-cultural tourist destination and an agro-industrial province. Several years of research, multi-sectoral consultations, technical working group meetings and a Provincial Environment Summit went into its crafting. The Bohol Environment Code mandated the creation of a Bohol Environment Management Office within the provincial government to oversee the implementation of the Code's provisions encompassing coastal, mineral, forest, and water resources management; solid and liquid waste management, air and noise pollution control, environmental impact assessment, land use planning and ecotourism.